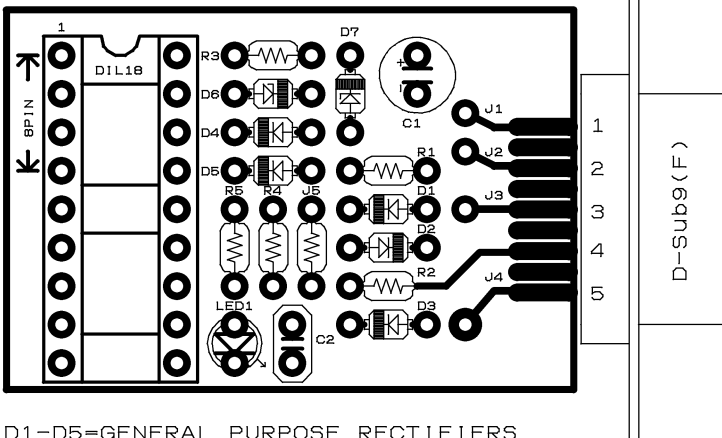


R1, R2=1.5k C1=100uF (16V-35V)
 R3, R4=10k C2=0.1uF (2.54mm)
 R5=1k
 J5=0 (JUMPER)



D1-D5=GENERAL PURPOSE RECTIFIERS
 LIKE 1S1588(TOSHIBA)
 D6=ZENNER 5.1V
 D7=ZENNER 13V